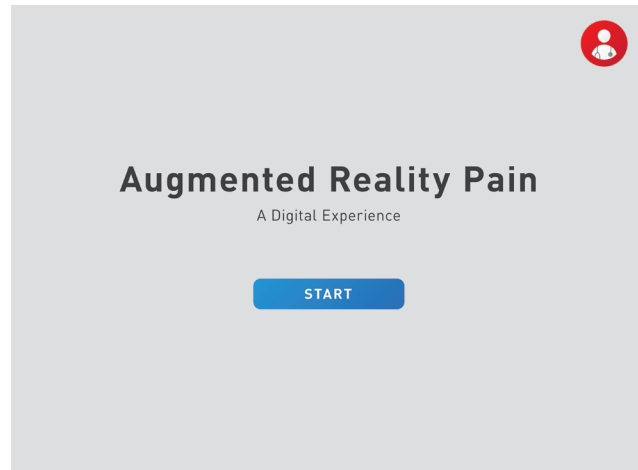
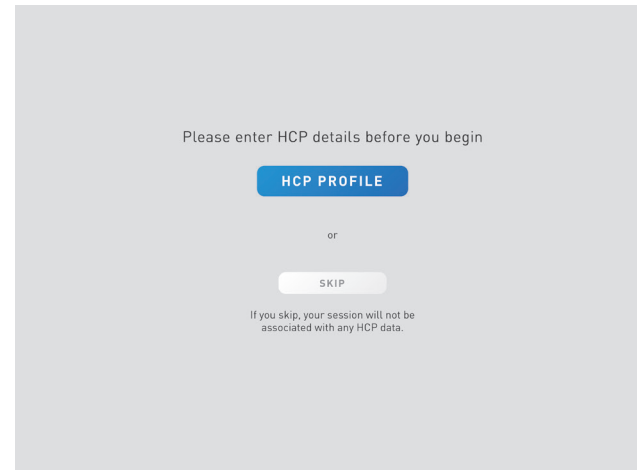


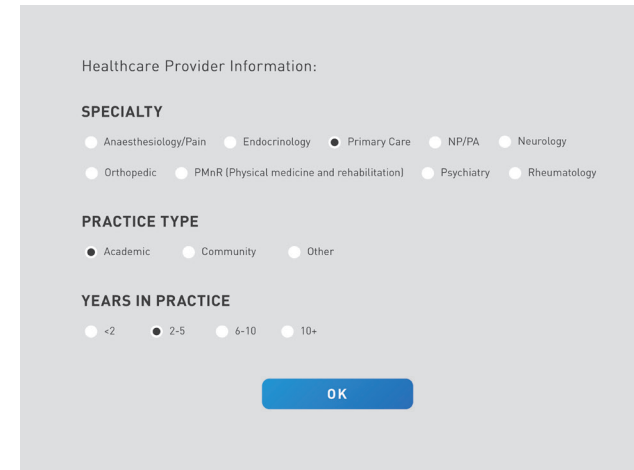
LYRICA AR EXPERIENCE | HOMEPAGE & ANALYTICS



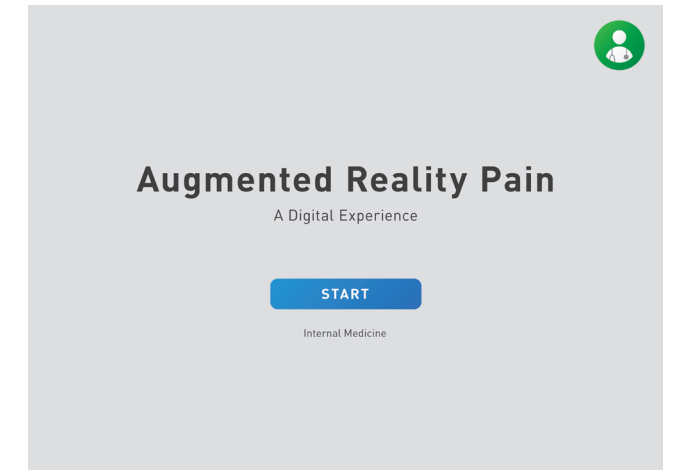
HOMEPAGE
(without Analytics)



SESSION INTERRUPTER



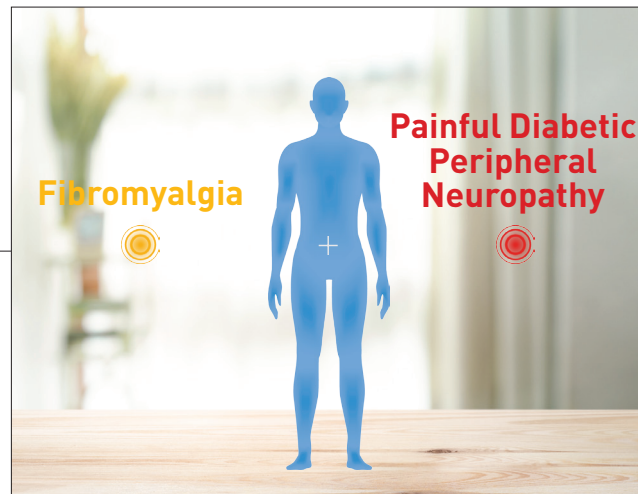
ANALYTICS INPUT



HOMEPAGE
(with Analytics)

LYRICA AR EXPERIENCE | FM PATH

Frame 0



Visual:

- Trigger **animates into life** and unisex 3D figure builds off of trigger, moves around naturally, like a human
- Text animates in with radiating points underneath

Text:

- [Left] Fibromyalgia
- [Right] Painful Diabetic Peripheral Neuropathy

Functionality:

- User can manipulate iPad to move crosshair to choose an indication

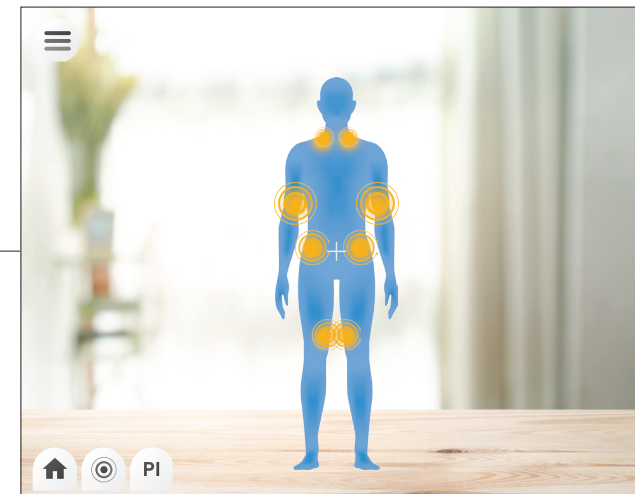
Frame 1.1



Functionality:

- User moves **crosshair over point**, the activation point enlarges and becomes a thicker dial 'loading' animation

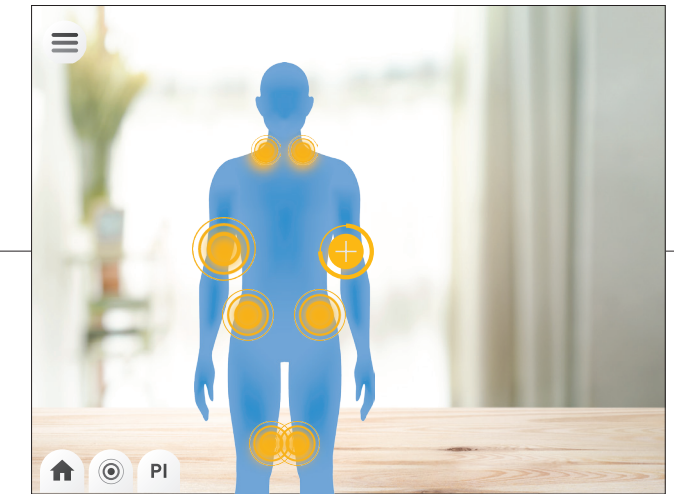
Frame 2.1a



Visual:

- Pulsing/rippling indicators **radiate** on figure in pairs
- Figure is slightly moving to appear life-like

Frame 2.1b

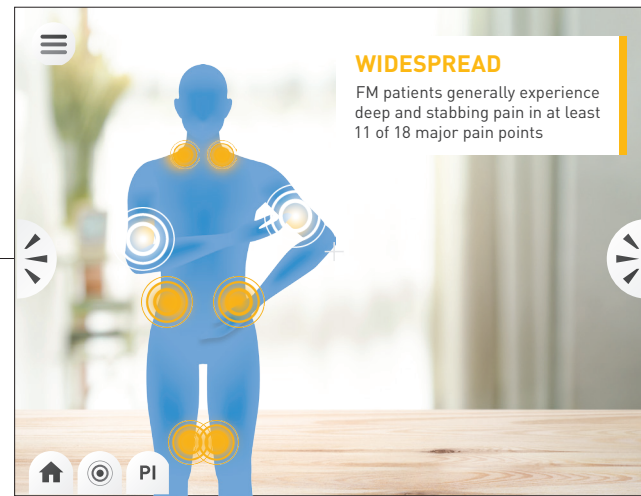


Functionality:

- User moves **crosshair over activation point**, the pain point enlarges and becomes a thicker dial 'loading' animation

LYRICA AR EXPERIENCE | FM PATH

Frame 3.1

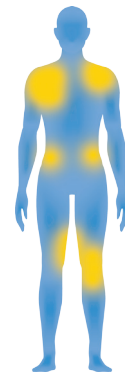
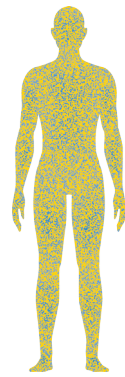


Visual:

- Selected radiating points turn white
- **Call out** animates on iPad screen, static/2D
- **Figure is in pain**, color animates based on selected point:

Text:

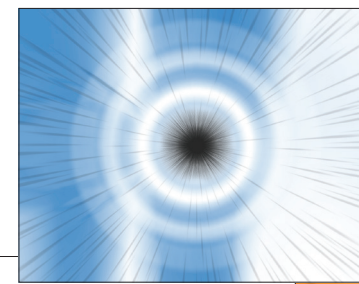
- **WIDESPREAD**
FM patients generally experience deep and stabbing pain in at least 11 of 18 major pain points
(yellow SPREADS over entire body)
- **INTENSE**
The pain associated with FM is the defining feature of the disease, disrupting patients' lives
(yellow STATIC all over body)
- **CHALLENGING**
FM can be hard to identify but for patients it can be even more difficult to describe their pain levels accurately
(BLURRY, yellow, confusing areas grow and shrink)
- **EXHAUSTING**
Most fibromyalgia patients will report not only physical pain but psychological symptoms as well, such as: fatigue, trouble sleeping and sensitivity to light and sound
(yellow halo around body, figure EXHAUSED)



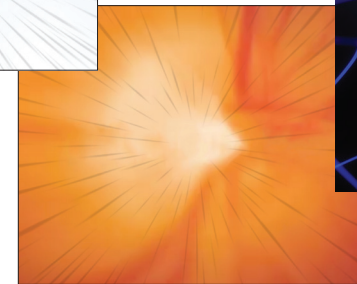
Functionality:

- Text box will remain up until another one is selected with the crosshair
- Buttons to go back to the next section appear at the sides of the screen

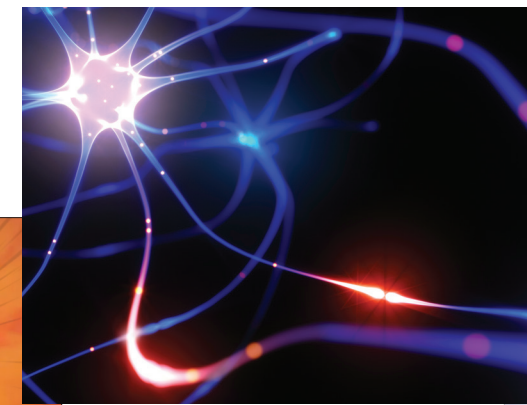
Frame 4.1a



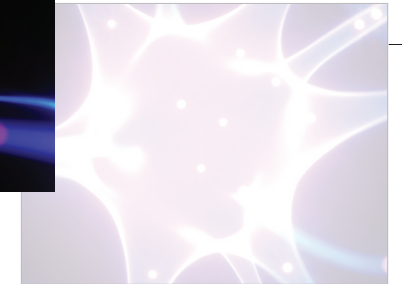
Frame 4.1b



Frame 4.1c



Frame 4.1d



Visual:

- **Zoom** through the pain point
- Quick, realistic, 3D visual transition that feels like moving through the body (intended to be expressive, not anatomically correct)
- Zoom to white transition

Functionality:

- Once activated, this transition will be universal for all pain points
- User will have no interaction during segment

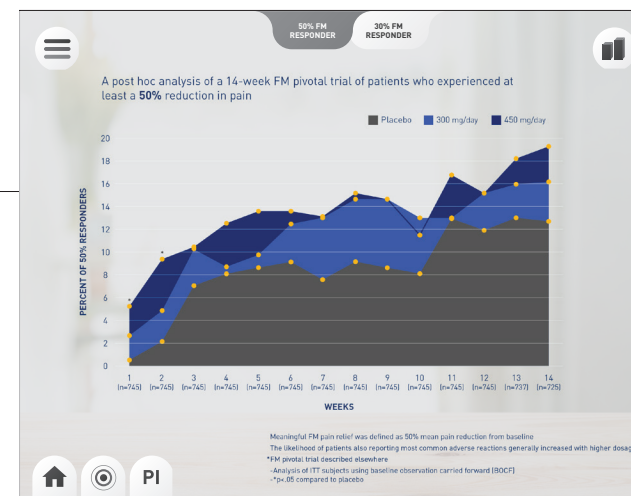
Frame 5.1a



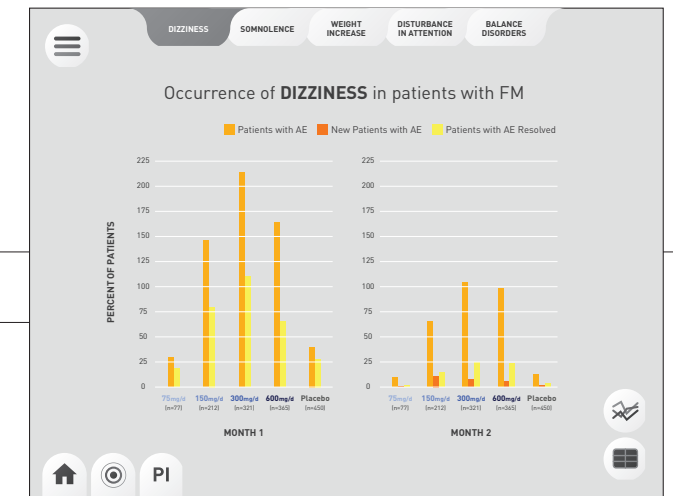
Frame 5.1b



Frame 5.1c



Frame 6.1



Visual:

- 3D rendering of the **FM 50%** Responder Data by week
- Title, week count and mini chart are in 2D, anchored to screen
- **65% transparent background**

Text:

- In a post hoc analysis of an 8 week FM pivotal trial, the percentage of patients with FM experiencing at least 50% mean pain reduction increased from baseline to endpoint

Functionality:

- User can interact with the charts by **zooming the iPad forward and back**, causing the chart to change and show growth over time
- This change over time will also be reflected in the 2D line-version of the data as a marker of position
- 2D / 3D Chart Toggle - when selected animates 2D chart in lower right corner to full screen width. Nav button and 2D / 3D toggle are accessible in both modes
- Menu icon includes options that link to corresponding screen

Visual:

- **AE Data**
- **Dosing Data**

Visual:

- Static 2D rendering of the FM 50% Responder Data by week. On screen, not AR space
- **65% transparent background**

Text:

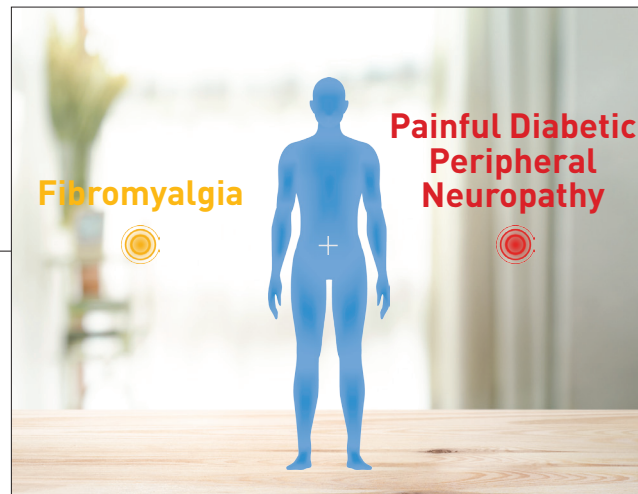
- In a post hoc analysis of an 8 week FM pivotal trial, the percentage of patients with FM experiencing at least 50% mean pain reduction increased from baseline to endpoint

Functionality:

- 2D / 3D Chart Toggle - when selected animates 2D chart to default lower right corner and revealing corresponding 3D chart
- Menu icon includes options that link to corresponding screen

LYRICA AR EXPERIENCE | DPN PATH

Frame 0



Visual:

- Trigger **animates into life** and unisex 3D figure builds off of trigger, moves around naturally, like a human
- Text animates in with radiating points underneath

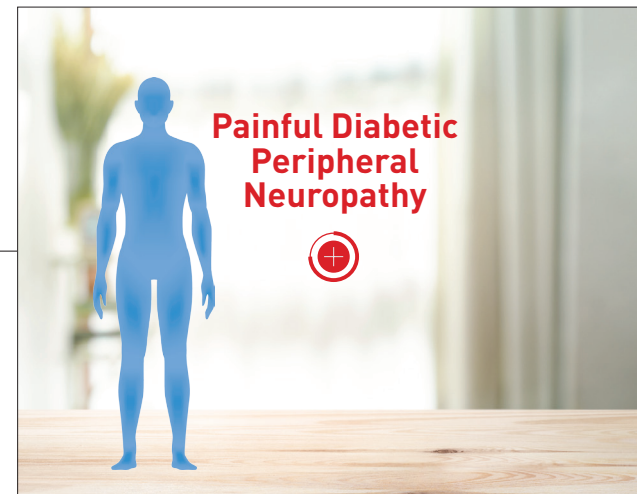
Text:

- [Left] Fibromyalgia
- [Right] Painful Diabetic Peripheral Neuropathy

Functionality:

- User can manipulate iPad to move crosshair to choose an indication

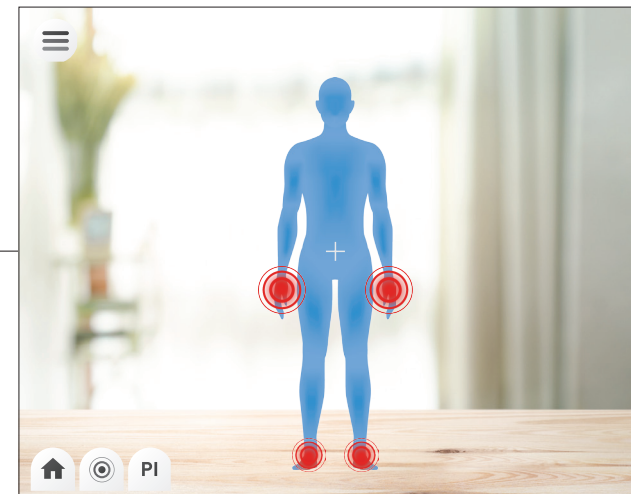
Frame 1.2



Functionality:

- User moves **crosshair over point**, the activation point enlarges and becomes a thicker dial 'loading' animation

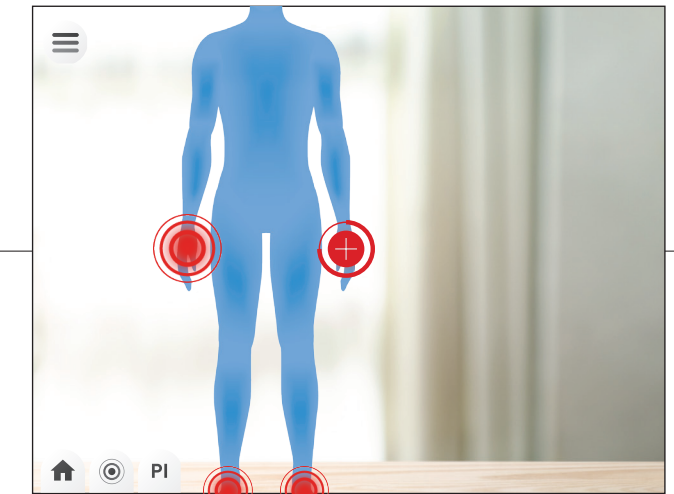
Frame 2.2a



Visual:

- Pulsing/rippling indicators **radiate** on figure in pairs
- Figure is slightly moving to appear life-like

Frame 2.2b

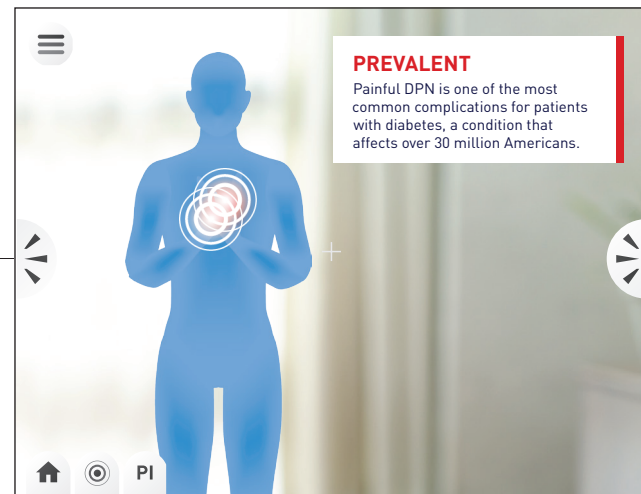


Functionality:

- User moves **crosshair over activation point**, the point enlarges and becomes a thicker dial 'loading' animation
- A vibration will signify that a pain point has been chosen

LYRICA AR EXPERIENCE | DPN PATH

Frame 3.2



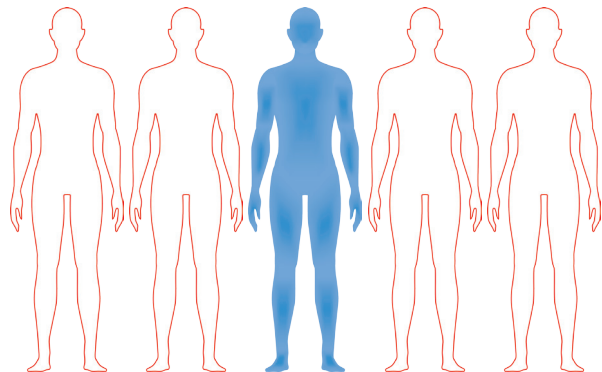
Visual:

- Selected radiating points turn white
- **Call out** animates on iPad screen, static/2D
- **Figure is in pain**, color animates based on selected point:

Text:

- **PREVALENT**
Painful DPN is one of the most common complications for patients with diabetes, a condition that affects over 30 million Americans
*(red **OUTLINES** of other bodies animate out, next to the blue body, mimicking blue body)*

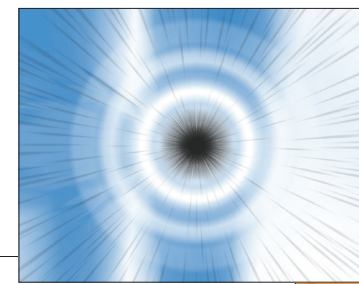
- **DISRUPTIVE**
Patients' with painful DPN experience pain that can impair the functionality of their hands and feet
*(red **STATIC** in hand and feet area)*



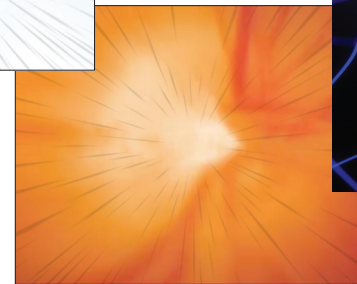
Functionality:

- Text box will remain up until another one is selected with the crosshair
- Buttons to go back to the next section appear at the sides of the screen

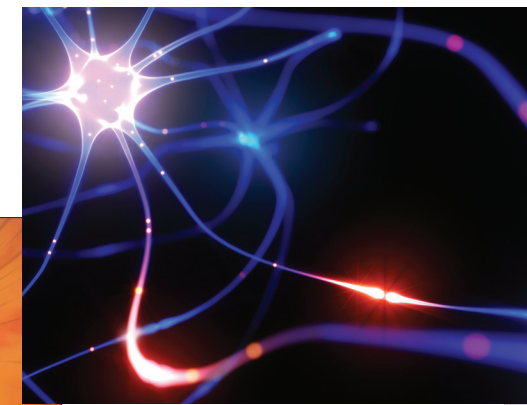
Frame 4.2a



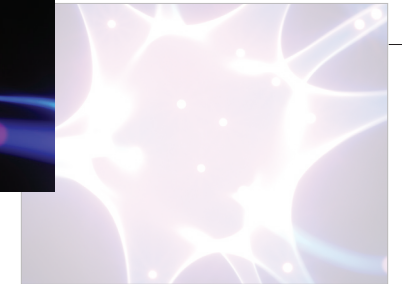
Frame 4.2b



Frame 4.2c



Frame 4.2d



Visual:

- **Zoom** through the pain point
- Quick, realistic, 3D visual transition that feels like moving through the body (intended to be expressive, not anatomically correct)
- Zoom to white transition

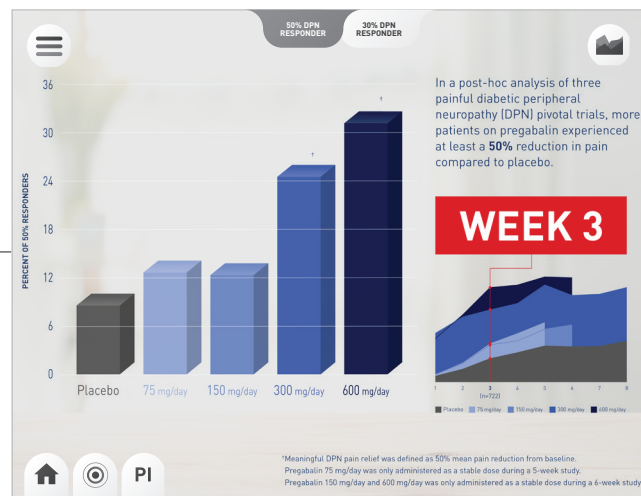
Functionality:

- Once activated, this transition will be universal for all pain points
- User will have no interaction during segment

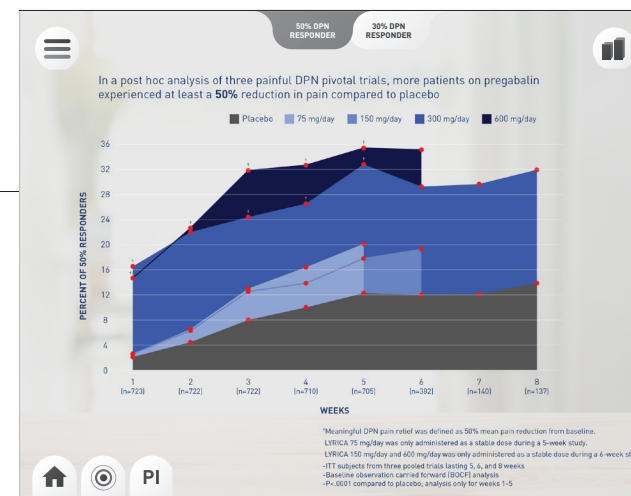
Frame 5.2a



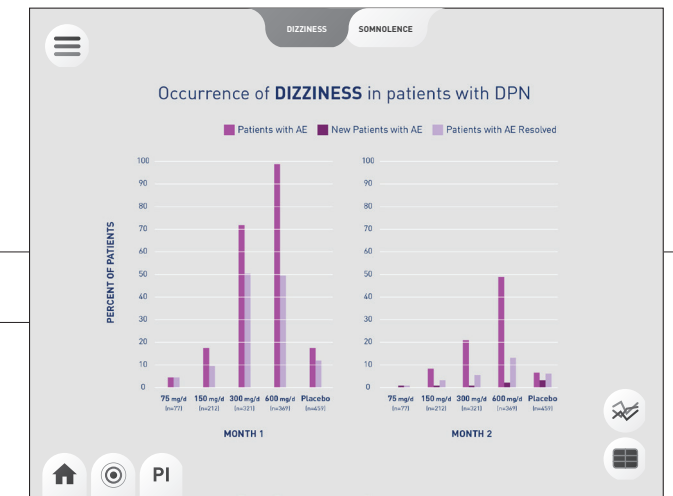
Frame 5.2b



Frame 5.2c



Frame 6.2



Visual:

- 3D rendering of the **DPN 50% Responder Data** by week
- Title, week count and mini chart are in 2D, anchored to screen

Text:

- In a post hoc analysis of 3 painful DPN pivotal trials, the percentage of patients with painful DPN experiencing at least 50% mean pain reduction increased from baseline to endpoint

Functionality:

- User can interact with the charts by **zooming the iPad forward and back**, causing the chart to change and show growth over time
- This change over time will also be reflected in the 2D line-version of the data as a marker of position
- 2D / 3D Chart Toggle - when selected animates 2D chart in lower right corner to full screen width. Nav button and 2D / 3D toggle are accessible in both modes
- Menu icon includes options that link to corresponding screen

Visual:

- **AE Data**
- **Dosing Data**

Visual:

- Static 2D rendering of the DPN 50% Responder Data by week. On screen, not AR space
- **65% transparent background**

Text:

- In a post hoc analysis of 3 painful DPN pivotal trials, the percentage of patients with painful DPN experiencing at least 50% mean pain reduction increased from baseline to endpoint

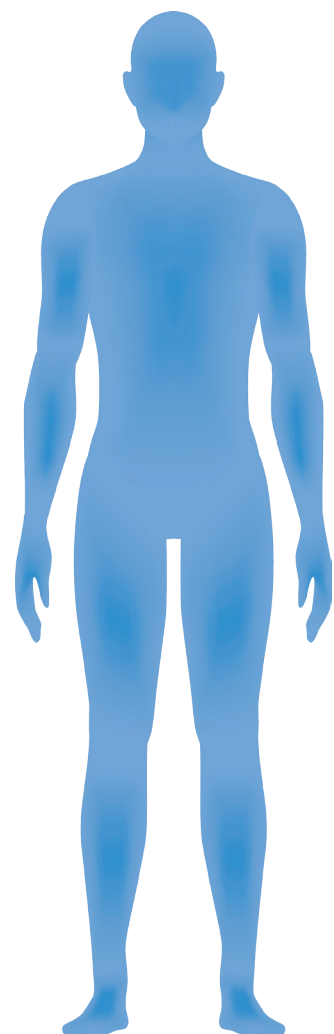
Functionality:

- 2D / 3D Chart Toggle - when selected animates 2D chart to default lower right corner and revealing corresponding 3D chart
- Menu icon includes options that link to corresponding screen

FIGURE

- Need to add facial features and expressions (like pain)
- Moves naturally and life-like

Example for holding onto pain points:
<http://www.gettyimages.com/license/618322235>



ZOOM

Example for zoom animation:
<http://www.gettyimages.com/license/518817935>

Example for neuron animation:
<http://www.gettyimages.com/license/149971740>

Possibly for trigger's neuron animation:
<http://www.gettyimages.com/license/160611696>

CROSSHAIR

- Small crosshair on screen at beginning



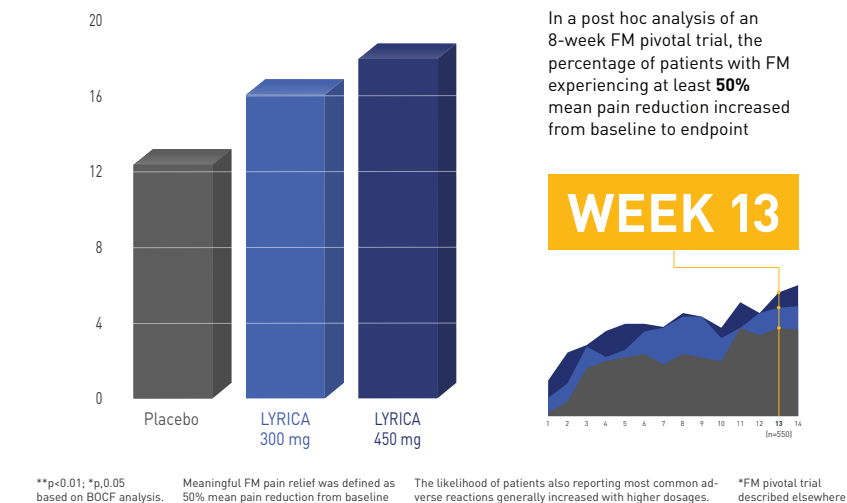
ACTIVATION POINT > LOADING CIRCLE

- When crosshair moves over, center enlarges to circle with loading bar



CHARTS

Look & Feel for **3D charts**:



- "n" number appears under week number when on that week

Look & Feel for **Analytics Form** (and START page):

YEARS IN PRACTICE

<2 2-5 6-10 10+

OK

- 12% gray background

TYPE

FONTS

DIN Regular
 ABCDEFGHIJKLMNOPQRSTUVWXYZ
 abcdefghijklmnopqrstuvwxyz

DIN Bold
 ABCDEFGHIJKLMNOPQRSTUVWXYZ
 abcdefghijklmnopqrstuvwxyz

Arial and **Arial Bold**
 ONLY for symbols: < > ≤ ≥

HEADERS

And body. Lorem ipsum et officias
 magnimus sitium et asimagni
 abo. Con remporibus modit
 adissit ibust, samenis explitatum
 as dolupnum ipietus et et latisto
 blanimportit et harum

Headers are always **DIN Bold and ALL CAPS**, copy is always DIN Regular and sentence-case

Copy is sized 25% smaller than the headline (example: if **HEADER** is 16pts, Copy is 12pts)

PUNCTUATION

No periods

COLORS

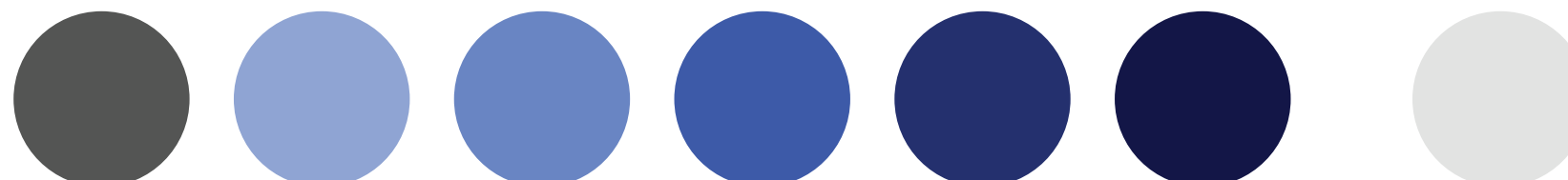


FIGURE	DPN	FM	ALL TEXT
C: 83 M: 56 Y: 0 K: 0	C: 10 M: 100 Y: 100 K: 0	C: 0 M: 30 Y: 100 K: 0	C: 0 M: 0 Y: 0 K: 90
R: 0 G: 112 B: 213	R: 218 G: 33 B: 40	R: 253 G: 185 B: 26	R: 64 G: 64 B: 64
#0070D5	#DA2028	#FDB813	#404040

NOTES















Cannot be in line with past LYRICA campaigns

CHARTS:

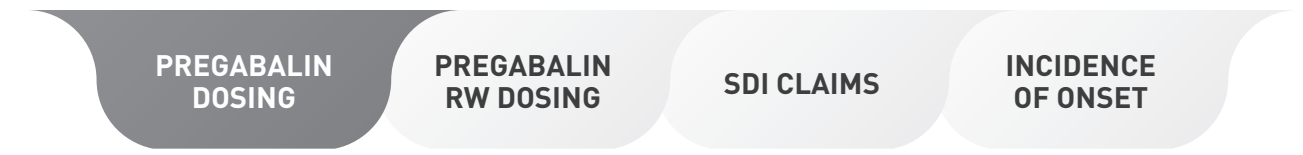


PLACEBO	75mg	150mg	300mg	450mg	600mg	BACKGROUNDS
C: 64 M: 56 Y: 55 K: 31	C: 43 M: 29 Y: 0 K: 0	C: 62 M: 44 Y: 0 K: 0	C: 85 M: 72 Y: 0 K: 0	C: 100 M: 93 Y: 24 K: 16	C: 100 M: 95 Y: 33 K: 46	C: 0 M: 0 Y: 0 K: 12
R: 85 G: 85 B: 85	R: 145 G: 165 B: 215	R: 105 G: 133 B: 195	R: 62 G: 90 B: 168	R: 0 G: 36 B: 117	R: 0 G: 19 B: 74	R: 226 G: 226 B: 226
#555555	#91A5D7	#6985C2	#3E59A8	#002375	#00134A	#E2E2E2


ICONS

	Menu		Dosing Data
	Close		Adverse Effects Data
	Analytics		AE Prevalence Data
	3D Responder Data		AE Charts
	2D Responder Data		Video
	Zoom		Home
			Pain Points
			PI


BUTTONS



^
Selected chart is gray with white type

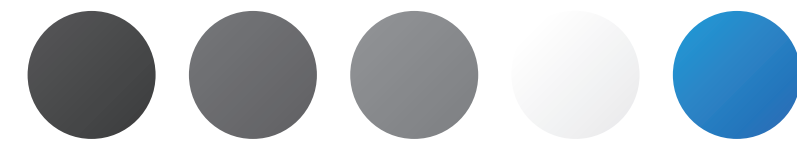


< Blue button option



< Gray button option

GRADIENTS



All gradients are at a 135° angle, with the darker color in the lower right corner.